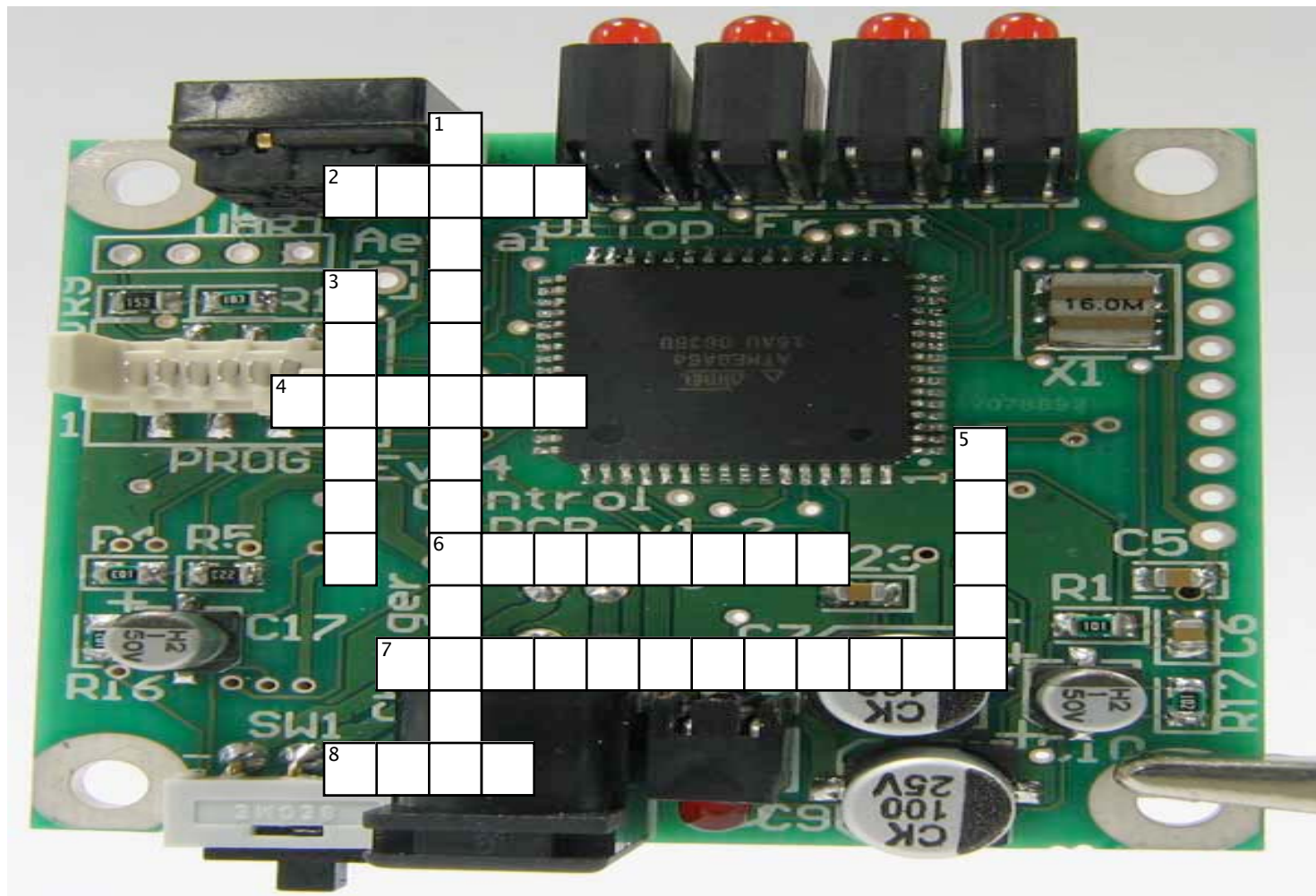


# Chapter 9 - Circuits



## Across

2. Unit for measuring energy.
4. Type of circuit where there is only one pathway for current.
6. Type of circuit where there are multiple pathways for current.
7. A unit of energy used by power companies.
8. Unit for measuring power.

## Down

1. Location where a circuit divides into different pathways.
3. Power multiplied by time equals this.
5. The rate of change in energy.